

SR510 (G302)

SR510 (G302)

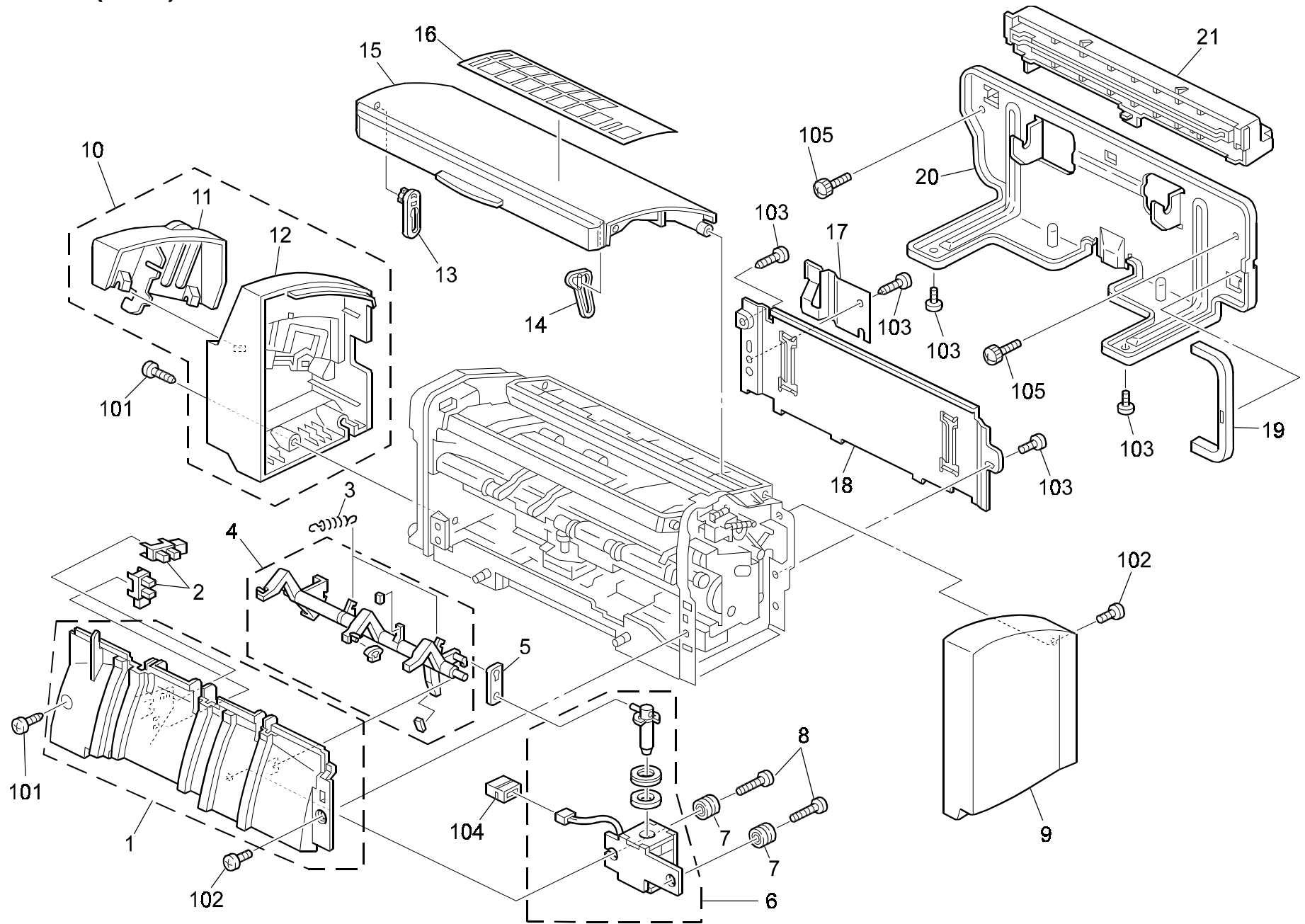
PARTS CATALOG

This catalog gives the numbers and names of parts on this machine.

CONTENTS

1.Exterior (G302).....	2
2.Shift Tray (G302).....	4
3.Drive Section (G302).....	6
4.Paper Exit Section (G302)	8
5.Paper Feed Section (G302)	10
6.Frame/Electrical Section (G302).....	12
PARTS INDEX	15

1.Exterior (G302)



1.Exterior (G302)

Index No.	Part No.	Description	Q'ty Per Assembly
1	G302 1061	Guide Plate - Lower	1
2	G302 1012	Photointerruptor	2
3	G302 1150	Spring - Paper Sensor	1
4	G302 0400	Lever - Paper Sensor Ass'y	1
5	G302 1106	Link - Paper Sensor	1
6	G302 0410	Solenoid - Paper Sensor Ass'y	1
7	G302 1143	Rubber Cushion - MM6	2
8	G302 1526	Screw - 4X12	2
9	G302 1082	Cover - Front	1
10	G302 0430	Cover - Rear Ass'y	1
11	G302 1057	Cover - Rear Window	1
12	G302 1083	Cover - Rear	1
13	G302 1100	Link - Cover - Rear	1
14	G302 1090	Link - Cover - Front	1
15	G302 1087	Cover - Upper	1
16	G302 1153	Decal - Paper Jam	1
17	G302 1045	Spring Plate - Ground	1
18	G302 1042	Cover - Right	1
19	G302 1064	Cover - Bracket - Joint	1
20	G302 0470	Bracket - Joint Ass'y	1
21	G302 1113	Guide Plate - Joint	1

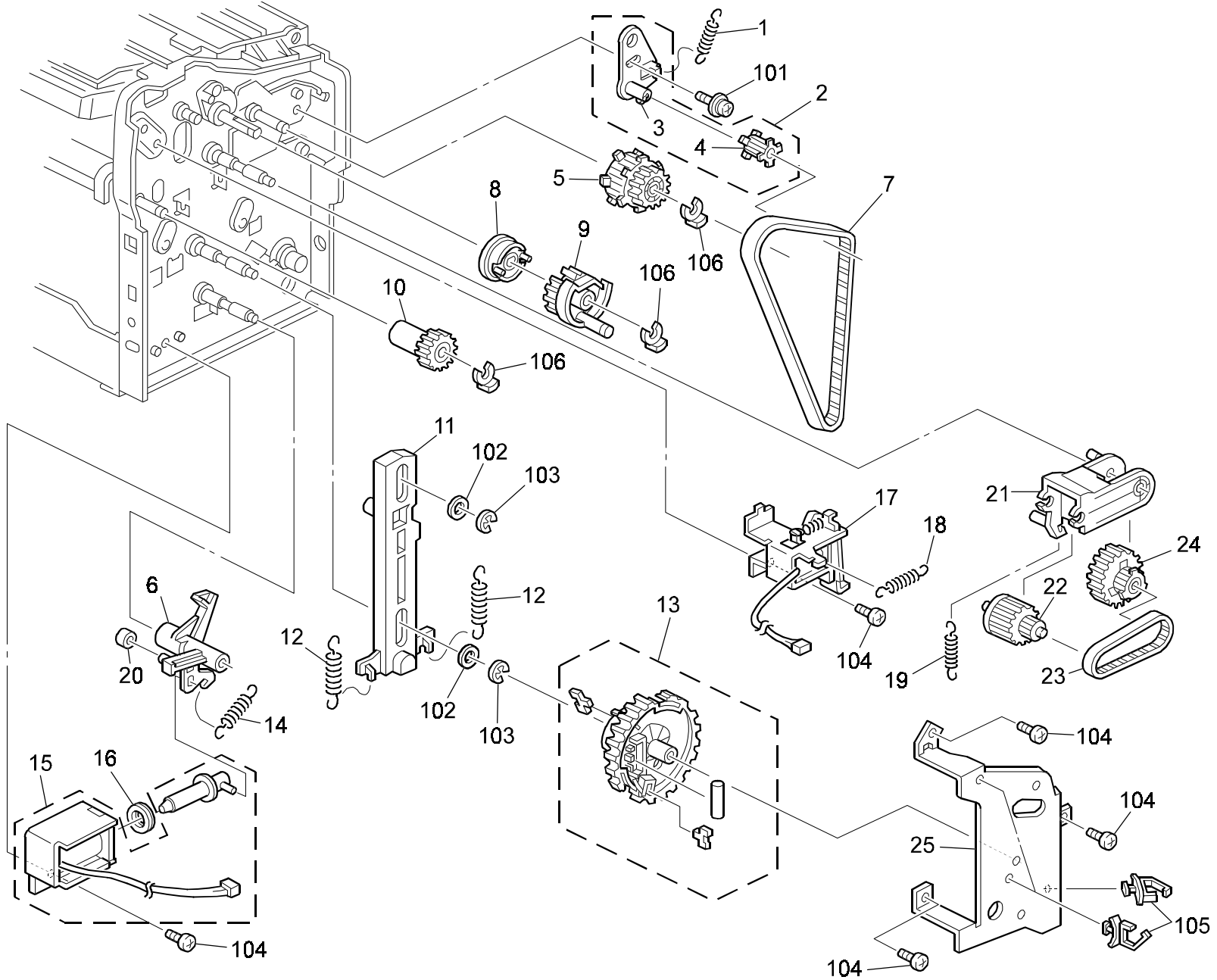
Index No.	Part No.	Description	Q'ty Per Assembly
101	G302 1500	Tapping Screw - 4x12	
102	G302 1504	Screw - 4X6	
103	G302 1501	Pan Head Screw - 4x7	
104	G302 1023	Connector - Solenoid	
105	G302 1529	Pan Head Screw - M4	

2.Shift Tray (G302)

Index No.	Part No.	Description	Q'ty Per Assembly
1	G302 1070	Holder - Tray	1
2	G302 1107	Plate - Tray	2
3	G302 1112	Cover - Rear - Link	1
4	G302 1154	DC Motor - Tray	1
5	G302 1012	Photointerruptor	2
6	G302 1066	Cover - Middle - Link	1
7	G302 1110	Gear: - Tray - Left	1
8	G302 1065	Cover - Front - Link	1
9	G302 1108	Gear - Z40	1
10	G302 1109	Gear - Tray - Right	1
11	G302 0450	Link - Tray Ass'y	1
12	G302 1111	Plate - Tray	1
13	G302 1067	Holder - Base Tray	1
14	G302 0460	Tray - Exit Ass'y	1
15	G302 1030	Drawer Connector - Tray	1
16	G302 1104	Cover - Connector	1
17	G302 1122	Rubber Cushion - Tray	3
18	G302 1062	Tray - Main	1
19	G302 1063	Tray - Slide - Middle	1
20	G302 1073	Tray - Slide - Leading Edge	1

Index No.	Part No.	Description	Q'ty Per Assembly
101	G302 1500	Tapping Screw - 4x12	
102	G302 1519	Snap Ring - Tray	

3. Drive Section (G302)

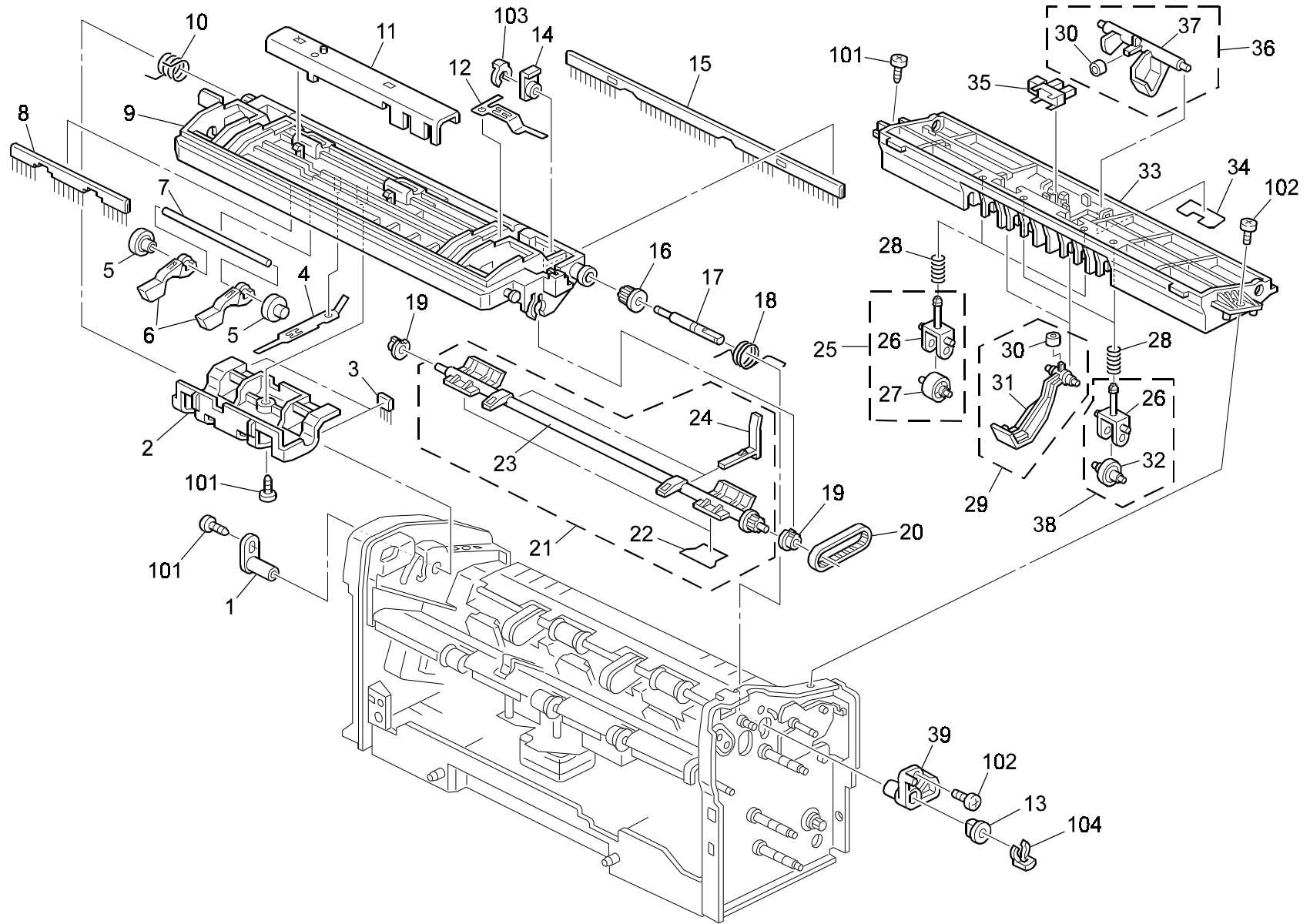


3. Drive Section (G302)

Index No.	Part No.	Description	Q'ty Per Assembly
1	G302 1119	Spring - Belt Tension	1
2	G302 0500	Tensioner - Drive Ass'y	1
3	G302 1101	Holder - Belt Tensioner	1
4	G302 1069	Pulley - Z18	1
5	G302 1068	Pulley - Feed Out	1
6	G302 1076	Lever - Link	1
7	G302 1024	Timing Belt - Transport	1
8	G302 1081	Holder - Paddle	1
9	G302 1071	Gear - Paddle Z32	1
10	G302 1079	Gear - Z18	1
11	G302 1007	Link - Drive	1
12	G302 1127	Spring - Link	2
13	G302 0350	Gear - Link Z85 ASS'Y	1
14	G302 1128	Spring - Lever - Link	1
15	G302 0340	DC Solenoid - Exit Ass'y	1
16	G302 1144	Rubber Cushion - Solenoid	1
17	G302 1155	Solenoid - Paddle	1
18	G302 1125	Spring - Clutch - Paddle	1
19	G302 1120	Spring - Holder	1
20	G302 1152	Rubber Bushing - MM5	1
21	G302 1077	Holder - Link - Drive	1
22	G302 1072	Pulley - Link - Left	1
23	G302 1121	Timing Belt - Link - Drive	1
24	G302 1080	Pulley - Link - Right	1
25	G302 1044	Bracket - Drive	1

Index No.	Part No.	Description	Q'ty Per Assembly
101	G302 1509	Pan Head Screw - 3x6	
102	G302 1008	Washer - MM6	
103	G302 1505	Retaining Ring - MM5	
104	G302 1501	Pan Head Screw - 4x7	
105	G302 1506	Harness Clamp - Type B	
106	G302 1515	Snap Ring - MM4	

4. Paper Exit Section (G302)

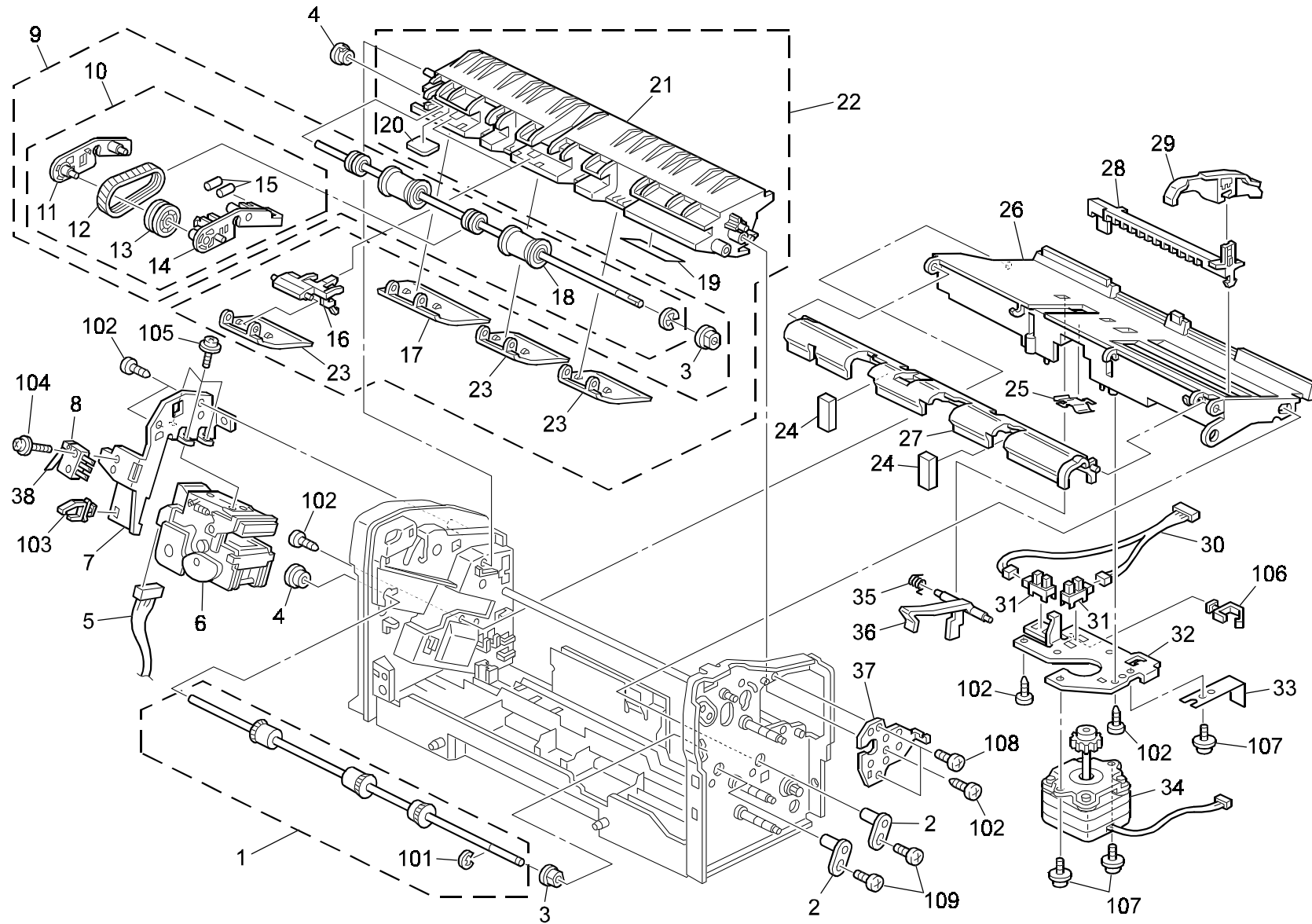


4.Paper Exit Section (G302)

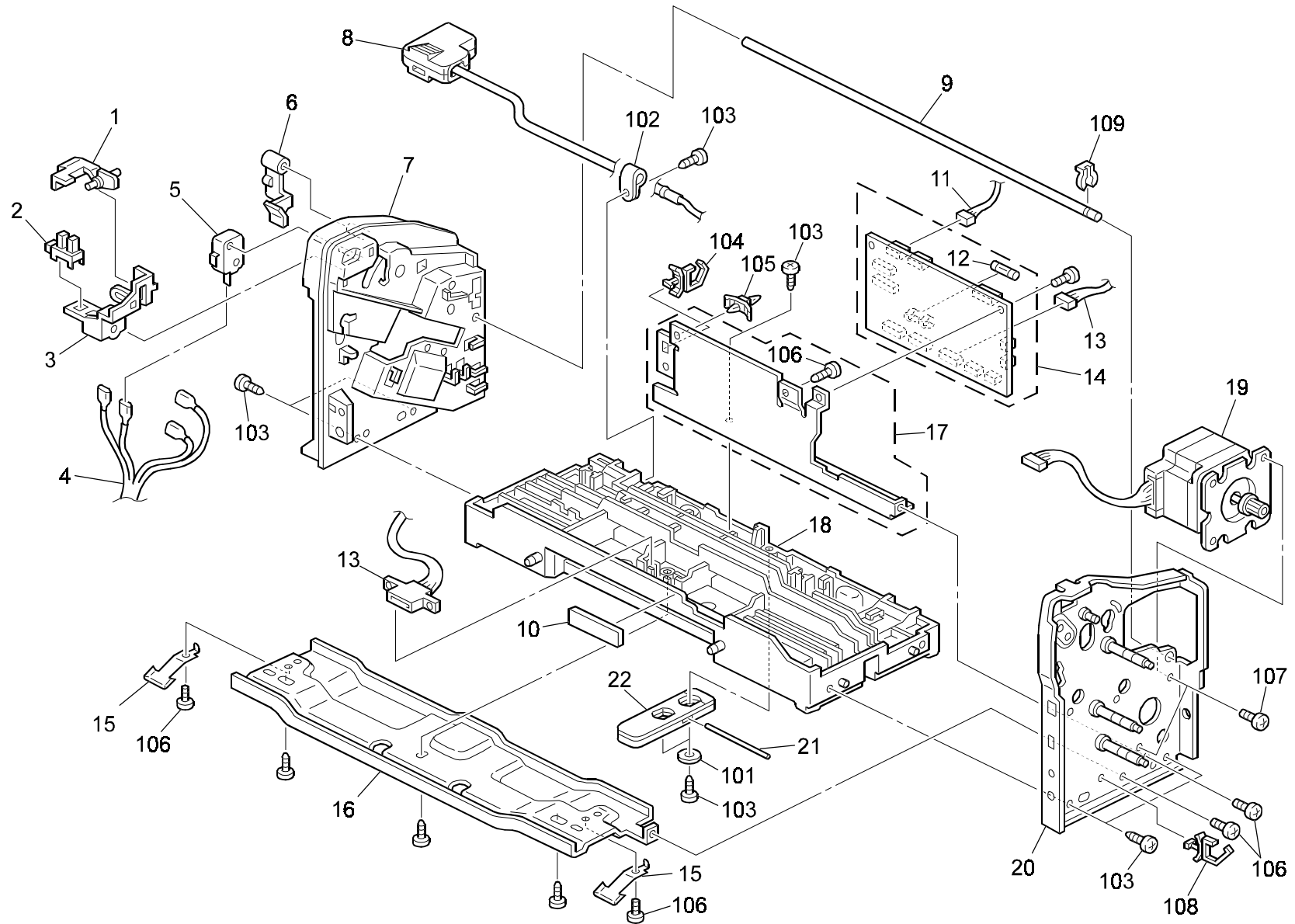
Index No.	Part No.	Description	Q'ty Per Assembly
1	G302 1517	Rubber Bushing - MM8	1
2	G302 1092	Guide - Paper Exit Unit	1
3	G302 1130	Brush - Small	2
4	G302 1047	Spring Plate - Rear Ground	1
5	G302 1075	Roller - Plate	2
6	G302 1093	Lever - Paper Exit Unit	2
7	G302 1049	Shaft - Plate	1
8	G302 1129	Brush - Middle	1
9	G302 1074	Guide Plate - Paper Exit Unit	1
10	G302 1115	Spring - Paper Exit Unit - Rear	1
11	G302 1041	Bracket - Paper Exit Unit	1
12	G302 1046	Spring Plate - Front Ground	1
13	G302 1514	Bushing - MM6	1
14	G302 1527	Bushing - Paddle - MM5	1
15	G302 1124	Brush - Large	1
16	G302 1085	Pulley - Paddle - Z14	1
17	G302 1050	Shaft - Drive - Paddle	1
18	G302 1114	Spring - Paper Exit Unit - Front	1
19	G302 1528	Bushing - MM5	2
20	G302 1052	Timing Belt - Paddle	1
21	G302 0310	Shaft - Paddle Ass'y	1
22	G302 1126	Film - Paddle	2
23	G302 1084	Shaft - Paddle	1
24	G302 1123	Paddle - Exit	2
25	G302 0270	Roller - Driven - Rear Ass'y	2
26	G302 1060	Holder - Roller	4
27	G302 1091	Roller - Pull Back Belt	2
28	G302 1116	Spring - Driven Roller	4
29	G302 0290	Lever - Plate Ass'y	2
30	G302 1152	Rubber Bushing - MM5	2
31	G302 1088	Lever - Plate	2
32	G302 1102	Pressure Roller - Front	2
33	G302 1086	Guide - Entrance - Upper	1
34	G302 1137	Film - Entrance	1
35	G302 1012	Photointerruptor	1

Index No.	Part No.	Description	Q'ty Per Assembly
36	G302 0260	Feeler - Entrance Guide Ass'y	1
37	G302 1089	Feeler - Entrance Guide	1
38	G302 0280	Roller - Driven - Front Ass'y	2
39	G302 1518	Bushing - Paper Exit Unit - Point	1
101	G302 1500	Tapping Screw - 4x12	
102	G302 1504	Screw - 4X6	
103	G302 1515	Snap Ring - MM4	
104	G302 1510	Snap Ring - Mm5	

5.Paper Feed Section (G302)



6.Frame/Electrical Section (G302)



6.Frame/Electrical Section (G302)

Index No.	Part No.	Description	Q'ty Per Assembly
1	G302 1011	Feeler - Cover Detector	1
2	G302 1012	Photointerruptor	1
3	G302 1010	Bracket - Cover Detector	1
4	G302 1014	Harness - Micro Switch	1
5	G302 1015	Micro Switch - Exit	1
6	G302 1013	Lever - Exit	1
7	G302 1009	Frame - Rear	1
8	G302 1031	Interface Cable - EXP	1
9	G302 1056	Shaft - Joint	1
10	G302 1148	Cushion - Base	1
11	G302 1028	Harness - Sensor	1
12	G302 1021	Fuse - Base	1
13	G302 1016	Harness - Drawer Connector	1
14	G302 0420	Main Control Board	1
15	G302 1002	Spring Plate - Ground	2
16	G302 1001	Bracket - Base	1
17	G302 0490	Bracket - Frame Base Ass'y	1
18	G302 1000	Base	1
19	G302 0120	Stepper Motor - KH56 Ass'y	1
20	G302 0130	Side Plate - Front Ass'y	1
21	G302 1004	Shaft - Bracket - Stopper	1
22	G302 1003	Bracket - Stopper	1

Index No.	Part No.	Description	Q'ty Per Assembly
101	G302 1005	Washer - MM5	
102	G302 1511	Harness Clamp	
103	G302 1500	Tapping Screw - 4x12	
104	G302 1503	Harness Clamp - Type A	
105	G302 1502	Locking Support	
106	G302 1501	Pan Head Screw - 4x7	
107	G302 1504	Screw - 4X6	
108	G302 1506	Harness Clamp - Type B	
109	G302 1513	Snap Ring - MM7	

Parts Index

Parts Index

Part No.	Description	Page and Index No.
G302 0120	Stepper Motor - KH56 Ass'y	13- 19
G302 0130	Side Plate - Front Ass'y	13- 20
G302 0200	Transport Roller:Ass'y	11- 1
G302 0210	Guide Plate - Entrance Ass'y	11- 22
G302 0220	Roller - Paper Feed Ass'y	11- 9
G302 0230	Roller - Paper Feed Sub Ass'y	11- 10
G302 0260	Feeler - Entrance Guide Ass'y	9- 36
G302 0270	Roller - Driven - Rear Ass'y	9- 25
G302 0280	Roller - Driven - Front Ass'y	9- 38
G302 0290	Lever - Plate Ass'y	9- 29
G302 0310	Shaft - Paddle Ass'y	9- 21
G302 0340	DC Solenoid - Exit Ass'y	7- 15
G302 0350	Gear - Link Z85 ASS'Y	7- 13
G302 0400	Lever - Paper Senser Ass'y	3- 4
G302 0410	Solenoid - Paper Senser Ass'y	3- 6
G302 0420	Main Control Board	13- 14
G302 0430	Cover - Rear Ass'y	3- 10
G302 0450	Link - Tray Ass'y	5- 11
G302 0460	Tray - Exit Ass'y	5- 14
G302 0470	Bracket - Joint Ass'y	3- 20
G302 0490	Bracket - Frame Base Ass'y	13- 17
G302 0500	Tensioner - Drive Ass'y	7- 2
G302 1000	Base	13- 18
G302 1001	Bracket - Base	13- 16
G302 1002	Spring Plate - Ground	13- 15
G302 1003	Bracket - Stopper	13- 22
G302 1004	Shaft - Bracket - Stopper	13- 21
G302 1005	Washer - MM5	13-101
G302 1007	Link - Drive	7- 11
G302 1008	Washer - MM6	7-102
G302 1009	Frame - Rear	13- 7
G302 1010	Bracket - Cover Detector	13- 3
G302 1011	Feeler - Cover Detector	13- 1
G302 1012	Photointerruptor	11- 31
G302 1012	Photointerruptor	5- 5

Part No.	Description	Page and Index No.
G302 1012	Photointerruptor	13- 2
G302 1012	Photointerruptor	9- 35
G302 1012	Photointerruptor	3- 2
G302 1013	Lever - Exit	13- 6
G302 1014	Harness - Micro Switch	13- 4
G302 1015	Micro Switch - Exit	13- 5
G302 1016	Harness - Drawer Connector	13- 13
G302 1016	Harness - Drawer Connector	11- 5
G302 1017	Guide Plate - Tray - Front	11- 26
G302 1018	Spring Plate - Guide Plate - Front	11- 27
G302 1019	Rack - Side Fence	11- 28
G302 1020	Side Fence	11- 29
G302 1021	Fuse - Base	13- 12
G302 1022	Micro Switch - Cover	11- 8
G302 1023	Connector - Solenoid	3-104
G302 1024	Timing Belt - Transport	7- 7
G302 1028	Harness - Sensor	13- 11
G302 1029	Harness - Jogger Fence	11- 30
G302 1030	Drawer Connector - Tray	5- 15
G302 1031	Interface Cable - EXP	13- 8
G302 1032	Stepper Motor - Jogger Fence	11- 34
G302 1035	Lever - Micro Switch	11- 38
G302 1036	Spring Plate - Rack	11- 25
G302 1037	Ground Plate - Jogger Fence	11- 33
G302 1038	Bracket - Stepper Motor	11- 32
G302 1039	Bracket - Guide Plate - Entrance	11- 37
G302 1041	Bracket - Paper Exit Unit	9- 11
G302 1042	Cover - Right	3- 18
G302 1043	Bracket - Stapler Unit	11- 7
G302 1044	Bracket - Drive	7- 25
G302 1045	Spring Plate - Ground	3- 17
G302 1046	Spring Plate - Front Ground	9- 12
G302 1047	Spring Plate - Rear Ground	9- 4
G302 1049	Shaft - Plate	9- 7
G302 1050	Shaft - Drive - Paddle	9- 17

Part No.	Description	Page and Index No.
G302 1052	Timing Belt - Paddle	9- 20
G302 1054	Shaft - Weight - Cat	11- 15
G302 1056	Shaft - Joint	13- 9
G302 1057	Cover - Rear Window	3- 11
G302 1058	Feeler - Exit	11- 36
G302 1059	Guide - Entrance - Lower	11- 21
G302 1060	Holder - Roller	9- 26
G302 1061	Guide Plate - Lower	3- 1
G302 1062	Tray - Main	5- 18
G302 1063	Tray - Slide - Middle	5- 19
G302 1064	Cover - Bracket - Joint	3- 19
G302 1065	Cover - Front - Link	5- 8
G302 1066	Cover - Middle - Link	5- 6
G302 1067	Holder - Base Tray	5- 13
G302 1068	Pulley - Feed Out	7- 5
G302 1069	Pulley - Z18	7- 4
G302 1070	Holder - Tray	5- 1
G302 1071	Gear - Paddle Z32	7- 9
G302 1072	Pulley - Link - Left	7- 22
G302 1073	Tray - Slide - Leading Edge	5- 20
G302 1074	Guide Plate - Paper Exit Unit	9- 9
G302 1075	Roller - Plate	9- 5
G302 1076	Lever - Link	7- 6
G302 1077	Holder - Link - Drive	7- 21
G302 1079	Gear - Z18	7- 10
G302 1080	Pulley - Link - Right	7- 24
G302 1081	Holder - Paddle	7- 8
G302 1082	Cover - Front	3- 9
G302 1083	Cover - Rear	3- 12
G302 1084	Shaft - Paddle	9- 23
G302 1085	Pulley - Paddle - Z14	9- 16
G302 1086	Guide - Entrance - Upper	9- 33
G302 1087	Cover - Upper	3- 15
G302 1088	Lever - Plate	9- 31
G302 1089	Feeler - Entrance Guide	9- 37

Part No.	Description	Page and Index No.
G302 1090	Link - Cover - Front	3- 14
G302 1091	Roller - Pull Back Belt	9- 27
G302 1092	Guide - Paper Exit Unit	9- 2
G302 1093	Lever - Paper Exit Unit	9- 6
G302 1094	Pressure Plate - Paper Feed	11- 23
G302 1095	Pressure Plate - Rear	11- 17
G302 1096	Holder - Cat Roller - Front	11- 14
G302 1097	Holder - Cat Roller - Rear	11- 11
G302 1098	Roller - Cat	11- 13
G302 1099	Holder - Paper Plate	11- 16
G302 1100	Link - Cover - Rear	3- 13
G302 1101	Holder - Belt Tensioner	7- 3
G302 1102	Pressure Roller - Front	9- 32
G302 1104	Cover - Connector	5- 16
G302 1106	Link - Paper Senser	3- 5
G302 1107	Plate - Tray	5- 2
G302 1108	Gear - Z40	5- 9
G302 1109	Gear - Tray - Right	5- 10
G302 1110	Gear: - Tray - Left	5- 7
G302 1111	Plate - Tray	5- 12
G302 1112	Cover - Rear - Link	5- 3
G302 1113	Guide Plate - Joint	3- 21
G302 1114	Spring - Paper Exit Unit - Front	9- 18
G302 1115	Spring - Paper Exit Unit - Rear	9- 10
G302 1116	Spring - Driven Roller	9- 28
G302 1117	Caterpillar Belt	11- 12
G302 1119	Spring - Belt Tension	7- 1
G302 1120	Spring - Holder	7- 19
G302 1121	Timing Belt - Link - Drive	7- 23
G302 1122	Rubber Cushion - Tray	5- 17
G302 1123	Paddle - Exit	9- 24
G302 1124	Brush - Large	9- 15
G302 1125	Spring - Clutch - Paddle	7- 18
G302 1126	Film - Paddle	9- 22
G302 1127	Spring - Link	7- 12

Part No.	Description	Page and Index No.
G302 1128	Spring - Lever - Link	7- 14
G302 1129	Brush - Middle	9- 8
G302 1130	Brush - Small	9- 3
G302 1131	Spring - Exit	11- 35
G302 1137	Film - Entrance	9- 34
G302 1138	Film - Guide Plate - Entrance	11- 20
G302 1141	Film - Guide Plate - Front	11- 19
G302 1143	Rubber Cushion - MM6	3- 7
G302 1144	Rubber Cushion - Solenoid	7- 16
G302 1147	Rubber Cushion - Guide Plate	11- 24
G302 1148	Cushion - Base	13- 10
G302 1149	Roller - Feed Out	11- 18
G302 1150	Spring - Paper Sensor	3- 3
G302 1152	Rubber Bushing - MM5	7- 20
G302 1152	Rubber Bushing - MM5	9- 30
G302 1153	Decal - Paper Jam	3- 16
G302 1154	DC Motor - Tray	5- 4
G302 1155	Solenoid - Paddle	7- 17
G302 1156	Stapler Unit	11- 6
G302 1500	Tapping Screw - 4x12	11-102
G302 1500	Tapping Screw - 4x12	3-101
G302 1500	Tapping Screw - 4x12	9-101
G302 1500	Tapping Screw - 4x12	13-103
G302 1500	Tapping Screw - 4x12	5-101
G302 1501	Pan Head Screw - 4x7	3-103
G302 1501	Pan Head Screw - 4x7	11-108
G302 1501	Pan Head Screw - 4x7	13-106
G302 1501	Pan Head Screw - 4x7	7-104
G302 1502	Locking Support	13-105
G302 1503	Harness Clamp - Type A	13-104
G302 1504	Screw - 4X6	11-109
G302 1504	Screw - 4X6	13-107
G302 1504	Screw - 4X6	3-102
G302 1504	Screw - 4X6	9-102
G302 1505	Retaining Ring - MM5	11-101

Part No.	Description	Page and Index No.
G302 1505	Retaining Ring - MM5	7-103
G302 1506	Harness Clamp - Type B	11-106
G302 1506	Harness Clamp - Type B	7-105
G302 1506	Harness Clamp - Type B	13-108
G302 1507	Screw - 2.3X12	11-104
G302 1508	Tapping Screw - 3x6	11-107
G302 1509	Pan Head Screw - 3x6	11-105
G302 1509	Pan Head Screw - 3x6	7-101
G302 1510	Snap Ring - Mm5	9-104
G302 1511	Harness Clamp	13-102
G302 1512	Harness Clamp - Type C	11-103
G302 1513	Snap Ring - MM7	13-109
G302 1514	Bushing - MM6	11- 3
G302 1514	Bushing - MM6	9- 13
G302 1515	Snap Ring - MM4	9-103
G302 1515	Snap Ring - MM4	7-106
G302 1516	Bushing - Side Plate - Rear	11- 4
G302 1517	Rubber Bushing - MM8	11- 2
G302 1517	Rubber Bushing - MM8	9- 1
G302 1518	Bushing - Paper Exit Unit - Point	9- 39
G302 1519	Snap Ring - Tray	5-102
G302 1526	Screw - 4X12	3- 8
G302 1527	Bushing - Paddle - MM5	9- 14
G302 1528	Bushing - MM5	9- 19
G302 1529	Pan Head Screw - M4	3-105

Part No.	Description	Page and Index No.
G302 0120	Stepper Motor - KH56 Ass'y	13- 19
G302 0130	Side Plate - Front Ass'y	13- 20
G302 0200	Transport Roller:Ass'y	11- 1
G302 0210	Guide Plate - Entrance Ass'y	11- 22
G302 0220	Roller - Paper Feed Ass'y	11- 9
G302 0230	Roller - Paper Feed Sub Ass'y	11- 10
G302 0260	Feeler - Entrance Guide Ass'y	9- 36
G302 0270	Roller - Driven - Rear Ass'y	9- 25
G302 0280	Roller - Driven - Front Ass'y	9- 38
G302 0290	Lever - Plate Ass'y	9- 29
G302 0310	Shaft - Paddle Ass'y	9- 21
G302 0340	DC Solenoid - Exit Ass'y	7- 15
G302 0350	Gear - Link Z85 ASS'Y	7- 13
G302 0400	Lever - Paper Sensor Ass'y	3- 4
G302 0410	Solenoid - Paper Sensor Ass'y	3- 6
G302 0420	Main Control Board	13- 14
G302 0430	Cover - Rear Ass'y	3- 10
G302 0450	Link - Tray Ass'y	5- 11
G302 0460	Tray - Exit Ass'y	5- 14
G302 0470	Bracket - Joint Ass'y	3- 20
G302 0490	Bracket - Frame Base Ass'y	13- 17
G302 0500	Tensioner - Drive Ass'y	7- 2
G302 1000	Base	13- 18
G302 1001	Bracket - Base	13- 16
G302 1002	Spring Plate - Ground	13- 15
G302 1003	Bracket - Stopper	13- 22
G302 1004	Shaft - Bracket - Stopper	13- 21
G302 1005	Washer - MM5	13-101
G302 1007	Link - Drive	7- 11
G302 1008	Washer - MM6	7-102
G302 1009	Frame - Rear	13- 7
G302 1010	Bracket - Cover Detector	13- 3
G302 1011	Feeler - Cover Detector	13- 1
G302 1012	Photointerruptor	11- 31
G302 1012	Photointerruptor	5- 5

Part No.	Description	Page and Index No.
G302 1012	Photointerruptor	13- 2
G302 1012	Photointerruptor	9- 35
G302 1012	Photointerruptor	3- 2
G302 1013	Lever - Exit	13- 6
G302 1014	Harness - Micro Switch	13- 4
G302 1015	Micro Switch - Exit	13- 5
G302 1016	Harness - Drawer Connector	13- 13
G302 1016	Harness - Drawer Connector	11- 5
G302 1017	Guide Plate - Tray - Front	11- 26
G302 1018	Spring Plate - Guide Plate - Front	11- 27
G302 1019	Rack - Side Fence	11- 28
G302 1020	Side Fence	11- 29
G302 1021	Fuse - Base	13- 12
G302 1022	Micro Switch - Cover	11- 8
G302 1023	Connector - Solenoid	3-104
G302 1024	Timing Belt - Transport	7- 7
G302 1028	Harness - Sensor	13- 11
G302 1029	Harness - Jogger Fence	11- 30
G302 1030	Drawer Connector - Tray	5- 15
G302 1031	Interface Cable - EXP	13- 8
G302 1032	Stepper Motor - Jogger Fence	11- 34
G302 1035	Lever - Micro Switch	11- 38
G302 1036	Spring Plate - Rack	11- 25
G302 1037	Ground Plate - Jogger Fence	11- 33
G302 1038	Bracket - Stepper Motor	11- 32
G302 1039	Bracket - Guide Plate - Entrance	11- 37
G302 1041	Bracket - Paper Exit Unit	9- 11
G302 1042	Cover - Right	3- 18
G302 1043	Bracket - Stapler Unit	11- 7
G302 1044	Bracket - Drive	7- 25
G302 1045	Spring Plate - Ground	3- 17
G302 1046	Spring Plate - Front Ground	9- 12
G302 1047	Spring Plate - Rear Ground	9- 4
G302 1049	Shaft - Plate	9- 7
G302 1050	Shaft - Drive - Paddle	9- 17

Part No.	Description	Page and Index No.
G302 1052	Timing Belt - Paddle	9- 20
G302 1054	Shaft - Weight - Cat	11- 15
G302 1056	Shaft - Joint	13- 9
G302 1057	Cover - Rear Window	3- 11
G302 1058	Feeler - Exit	11- 36
G302 1059	Guide - Entrance - Lower	11- 21
G302 1060	Holder - Roller	9- 26
G302 1061	Guide Plate - Lower	3- 1
G302 1062	Tray - Main	5- 18
G302 1063	Tray - Slide - Middle	5- 19
G302 1064	Cover - Bracket - Joint	3- 19
G302 1065	Cover - Front - Link	5- 8
G302 1066	Cover - Middle - Link	5- 6
G302 1067	Holder - Base Tray	5- 13
G302 1068	Pulley - Feed Out	7- 5
G302 1069	Pulley - Z18	7- 4
G302 1070	Holder - Tray	5- 1
G302 1071	Gear - Paddle Z32	7- 9
G302 1072	Pulley - Link - Left	7- 22
G302 1073	Tray - Slide - Leading Edge	5- 20
G302 1074	Guide Plate - Paper Exit Unit	9- 9
G302 1075	Roller - Plate	9- 5
G302 1076	Lever - Link	7- 6
G302 1077	Holder - Link - Drive	7- 21
G302 1079	Gear - Z18	7- 10
G302 1080	Pulley - Link - Right	7- 24
G302 1081	Holder - Paddle	7- 8
G302 1082	Cover - Front	3- 9
G302 1083	Cover - Rear	3- 12
G302 1084	Shaft - Paddle	9- 23
G302 1085	Pulley - Paddle - Z14	9- 16
G302 1086	Guide - Entrance - Upper	9- 33
G302 1087	Cover - Upper	3- 15
G302 1088	Lever - Plate	9- 31
G302 1089	Feeler - Entrance Guide	9- 37

Part No.	Description	Page and Index No.
G302 1090	Link - Cover - Front	3- 14
G302 1091	Roller - Pull Back Belt	9- 27
G302 1092	Guide - Paper Exit Unit	9- 2
G302 1093	Lever - Paper Exit Unit	9- 6
G302 1094	Pressure Plate - Paper Feed	11- 23
G302 1095	Pressure Plate - Rear	11- 17
G302 1096	Holder - Cat Roller - Front	11- 14
G302 1097	Holder - Cat Roller - Rear	11- 11
G302 1098	Roller - Cat	11- 13
G302 1099	Holder - Paper Plate	11- 16
G302 1100	Link - Cover - Rear	3- 13
G302 1101	Holder - Belt Tensioner	7- 3
G302 1102	Pressure Roller - Front	9- 32
G302 1104	Cover - Connector	5- 16
G302 1106	Link - Paper Senser	3- 5
G302 1107	Plate - Tray	5- 2
G302 1108	Gear - Z40	5- 9
G302 1109	Gear - Tray - Right	5- 10
G302 1110	Gear: - Tray - Left	5- 7
G302 1111	Plate - Tray	5- 12
G302 1112	Cover - Rear - Link	5- 3
G302 1113	Guide Plate - Joint	3- 21
G302 1114	Spring - Paper Exit Unit - Front	9- 18
G302 1115	Spring - Paper Exit Unit - Rear	9- 10
G302 1116	Spring - Driven Roller	9- 28
G302 1117	Caterpillar Belt	11- 12
G302 1119	Spring - Belt Tension	7- 1
G302 1120	Spring - Holder	7- 19
G302 1121	Timing Belt - Link - Drive	7- 23
G302 1122	Rubber Cushion - Tray	5- 17
G302 1123	Paddle - Exit	9- 24
G302 1124	Brush - Large	9- 15
G302 1125	Spring - Clutch - Paddle	7- 18
G302 1126	Film - Paddle	9- 22
G302 1127	Spring - Link	7- 12

Part No.	Description	Page and Index No.
G302 1128	Spring - Lever - Link	7- 14
G302 1129	Brush - Middle	9- 8
G302 1130	Brush - Small	9- 3
G302 1131	Spring - Exit	11- 35
G302 1137	Film - Entrance	9- 34
G302 1138	Film - Guide Plate - Entrance	11- 20
G302 1141	Film - Guide Plate - Front	11- 19
G302 1143	Rubber Cushion - MM6	3- 7
G302 1144	Rubber Cushion - Solenoid	7- 16
G302 1147	Rubber Cushion - Guide Plate	11- 24
G302 1148	Cushion - Base	13- 10
G302 1149	Roller - Feed Out	11- 18
G302 1150	Spring - Paper Senser	3- 3
G302 1152	Rubber Bushing - MM5	7- 20
G302 1152	Rubber Bushing - MM5	9- 30
G302 1153	Decal - Paper Jam	3- 16
G302 1154	DC Motor - Tray	5- 4
G302 1155	Solenoid - Paddle	7- 17
G302 1156	Stapler Unit	11- 6
G302 1500	Tapping Screw - 4x12	11-102
G302 1500	Tapping Screw - 4x12	3-101
G302 1500	Tapping Screw - 4x12	9-101
G302 1500	Tapping Screw - 4x12	13-103
G302 1500	Tapping Screw - 4x12	5-101
G302 1501	Pan Head Screw - 4x7	3-103
G302 1501	Pan Head Screw - 4x7	11-108
G302 1501	Pan Head Screw - 4x7	13-106
G302 1501	Pan Head Screw - 4x7	7-104
G302 1502	Locking Support	13-105
G302 1503	Harness Clamp - Type A	13-104
G302 1504	Screw - 4X6	11-109
G302 1504	Screw - 4X6	13-107
G302 1504	Screw - 4X6	3-102
G302 1504	Screw - 4X6	9-102
G302 1505	Retaining Ring - MM5	11-101

Part No.	Description	Page and Index No.
G302 1505	Retaining Ring - MM5	7-103
G302 1506	Harness Clamp - Type B	11-106
G302 1506	Harness Clamp - Type B	7-105
G302 1506	Harness Clamp - Type B	13-108
G302 1507	Screw - 2.3X12	11-104
G302 1508	Tapping Screw - 3x6	11-107
G302 1509	Pan Head Screw - 3x6	11-105
G302 1509	Pan Head Screw - 3x6	7-101
G302 1510	Snap Ring - Mm5	9-104
G302 1511	Harness Clamp	13-102
G302 1512	Harness Clamp - Type C	11-103
G302 1513	Snap Ring - MM7	13-109
G302 1514	Bushing - MM6	11- 3
G302 1514	Bushing - MM6	9- 13
G302 1515	Snap Ring - MM4	9-103
G302 1515	Snap Ring - MM4	7-106
G302 1516	Bushing - Side Plate - Rear	11- 4
G302 1517	Rubber Bushing - MM8	11- 2
G302 1517	Rubber Bushing - MM8	9- 1
G302 1518	Bushing - Paper Exit Unit - Point	9- 39
G302 1519	Snap Ring - Tray	5-102
G302 1526	Screw - 4X12	3- 8
G302 1527	Bushing - Paddle - MM5	9- 14
G302 1528	Bushing - MM5	9- 19
G302 1529	Pan Head Screw - M4	3-105